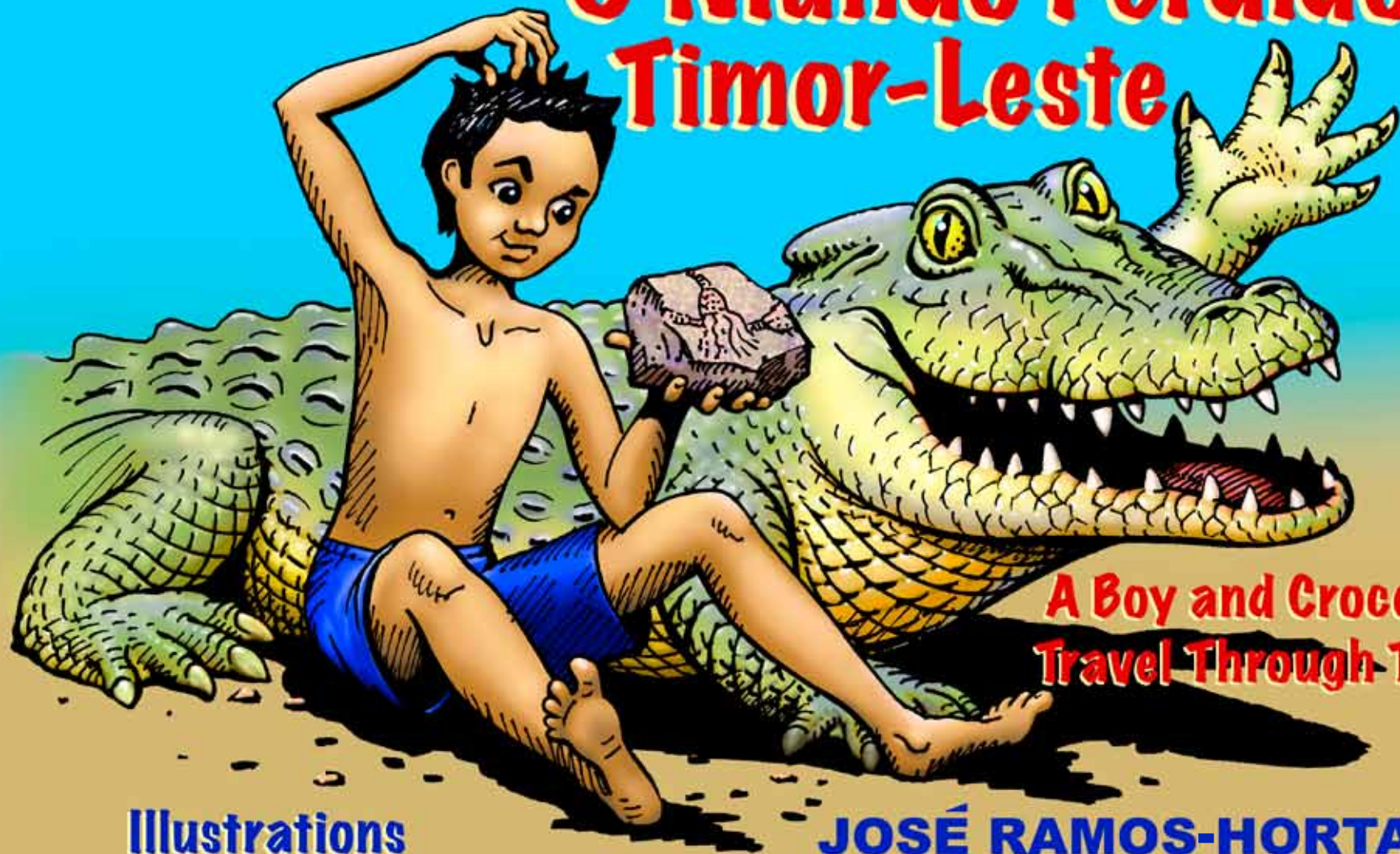


O Mundo Perdido Timor-Leste



**A Boy and Crocodile
Travel Through Time**

**Illustrations
Peter Trusler**

**JOSÉ RAMOS-HORTA &
PATRICIA VICKERS-RICH**

“Geologists have studied the rocks on Timor-Leste for over one hundred years now and have found out much more about how this island came to be. Perhaps the Boy and the Crocodile, our two legendary companions, can help geologists tell their scientific history of Timor. Let us imagine that they continue their fantastic travels into the past, in search of the beginnings of our enchanting island.”

José Ramos-Horta



Mundu bo'on azi' ha'al ba; Timor-Leste Mea'-gol Mone wo Laphae' gie therel Tempu no Mele
Zi'-gomo : José Ramos-Horta wo Patrícia Vickers-Rich

Artista (khes-gomo) : Peter Trusler

Lay-out : Draga Gelt

Conoco Philips, Alola wo School of Geosciences (Faculty of Science), Monash University, na artista gie servisu libru no are gege suporta maka'as.

ISBN

Published by the Monash Science Centre, Monash University ABN 12 377 614 012.

Clayton, Victoria, Australia. First Edition, August 2009.

R.P.: \$5.95

I tholi thara da goet, pazil gai' da gie ihe leal, thas uen thas uen die, uen theni pazil gai', to'o huen are sa gie ortografia ofisial aci ni' han ba'a si en cio uen na ga'i zi', zi' tuir ihe gie thas gie o gie matenek. Gai' bon ei Libru mil lo le gie are zi' tuir ihe Gai' Ai-asa Honalu gie ba'a si cio na libru ari lee ha'al ,die kometraiu, sujestaun ka Kritika hato'o gie bele zi'-gomo, Gilberto Mau Phelun Alves, gucui e-mail are no kontaktu: alvesgilberto38@yahoo.com. Ei ie komentariu, sujestaun ka Kritika hotuhotu na pazil gai' hadi'a gie zi' gomo don hili'on ni osog.



Cuth no i ie bei
mil ñiat gon no
lag, mug bai'is
na thesikh
no, ci'il athe
thanan ni'.





D

imil, en bele mug mug tul uen gene mele to'o mug tul balun uen phi'. Tenke nani gol-en, ba'a be athe thanan ni'. Ba'a no lag, ro wo belo'-gol aci ni' ta'.



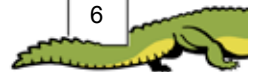


a'a tempu bo'on si i ie bei ginat gon-no lag ba ta', tempu bon si ola'i oto sa thara ni' ta',
bai cinig mos thara ni' ta'.





ie bei mil cuth gie meren azal
wo milig. Mais, ilin si meren da
oto ni phag-en ba'a goet, ola'i
komesa istuda cuen goton
na oto ba'a dele bele si ginig.
Wuu, si sa gia da ata gilen
man-on!





da goet, i ie bei mil cuth gie mug-logo-en azal wo milig, mais mug-logo-en ba'a no na i mundu are istuda.



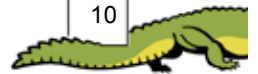


ie bei mil mos komesa dimil cuen goton na mug da logo-en, cuen goton na otin-en mug-
logo-en ha'al musu mo da cue maka'as. Akontesimentu onal ba'a ola'i komesa dale homo
ha'al hini sai konta'istori.





onta'istori ba'a gie bo'on bai dale konaba mug Timul da theo gene na man. Konta'istori ba'a bai dale konaba mug meten no gie, tempu bo'on si i ie mug are mo gebu gene lag ba



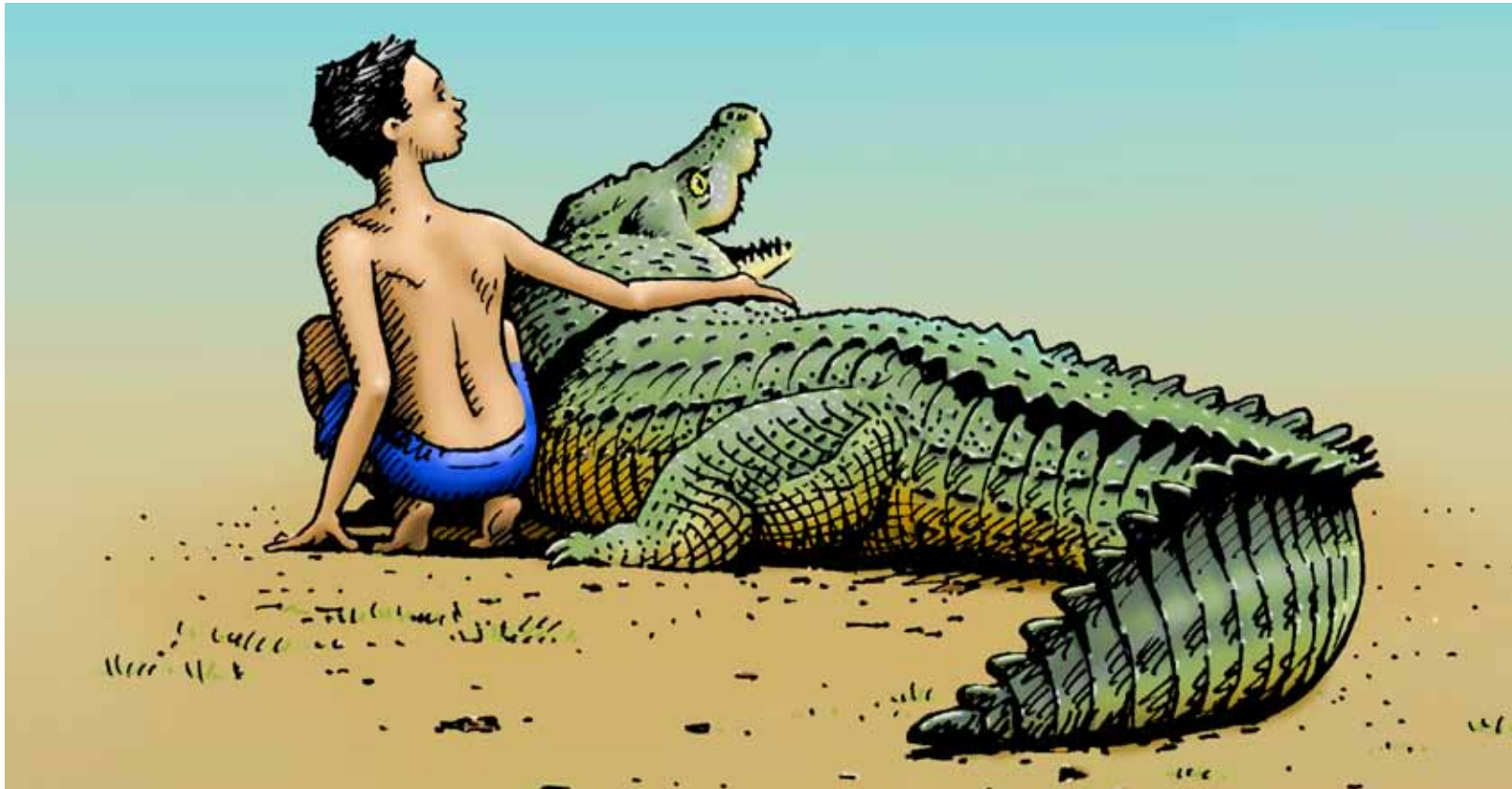


onta'istoria timul gie bo'on dale wu hangin cuth no lag laphae' bo'on mug Timul are no aci gin, laphae' ba'i ethan ta', mais ba'i hakarak bai ba'is thara gie. Kriatura ba'i gezel hobel dez ba'a si ba'i do'a gie athe mal dez.





onta'istori ba'a bai dale hangin le bo'on gie mea'-gol mone bo'on laphae' gol ba'i gita ajuda gin. Tia ga'al ba'a goet, olali therel mele athe mal.





n bo'on si hol mug mil-lo ari gie istuda di gini Jeologu. Ola'i hol mug Timul lo ari gie tho da istuda nare kholi' ni', istuda ha'al na' na ola'i meten thara, cuen goton na i ie mug are aci.

Paragraph missing?



Laphae'

Huen are i laphae' gucu therel nani loi ni' wa



ntau laphae' ba'i mone-gol ba'i gege are gin, "neto ucu mele majiku bon ho'on ta', neto ucu therel tho juta 250 cuth ba'a ata thebe gie!"



a'a ha'al olali mele, ba'abé mele si mug so' azal-li' ba'a goet mea'gol mone ba'i gogoen, ilin tho na phi' sa mo khoso nola' tepel liol lolon na giral lo.



Laphae'

Huen!







an ili il gebu ata debel gie, “laphae’ mea’-gol mone ba’i gege hangin, homo ha’al laphae’ mea’-gol mone ba’i gini dinup tha’a laun-on gie thecu. “eto sa ilin,” Laphae’ mea’-gol mone bai gege hangin, “tho zuta cuencuen cuth no lag, mug Timul are sai mug so’ ni’ ta’.”



o gebu gene “liriu mo gie aci”, khasa’ gig herug khae’ bon si agora i bele phi mo gie mil lo le-le gazal di goet. “Oo, Baukau gene, neto ola’i gie sesal hol-zian go’ oa no azal phi’u bon, tempu nei nama nucu ba’a mal lo - mais ola’i moris bei mil gon no helo.”

2 Paragraphs missing?



Liriu mo gie



Trilobita



P

hi masa' tho tempu
Permia Jeolojika gie
tho millaun 250 cuth
no lag gie.



Brakiopode



Briozoariu





e'a-gol mone giral ata apalen-on. Khasa' ba'is na gilin da sipu gucu thisal – mais ari daza tanba gie gi' balun-balun the ni'.



M

K

B

a'a gene mos briozoariu koen ba'is. Ulun bo'on ba'i aci tanba khasa' lain-gol los bu'an si khasa' osu mo oa eni no lele gia di (plankton) gie sesal na dibubun.

ea'-gol mone bai laphae' gege nakhi homo ha'al don kal li ko' dele sura, "ai di nego bo'on?"

hasa' bu'an si mo gebu gene el gie parte da ba'is khoi' ni' o giral hili'on bo'on tia khoi' ni' wo (giral) hili'on bo'on na tia – lolos won musu, giral onal ba'a belan uen no na tita bolu lolon.



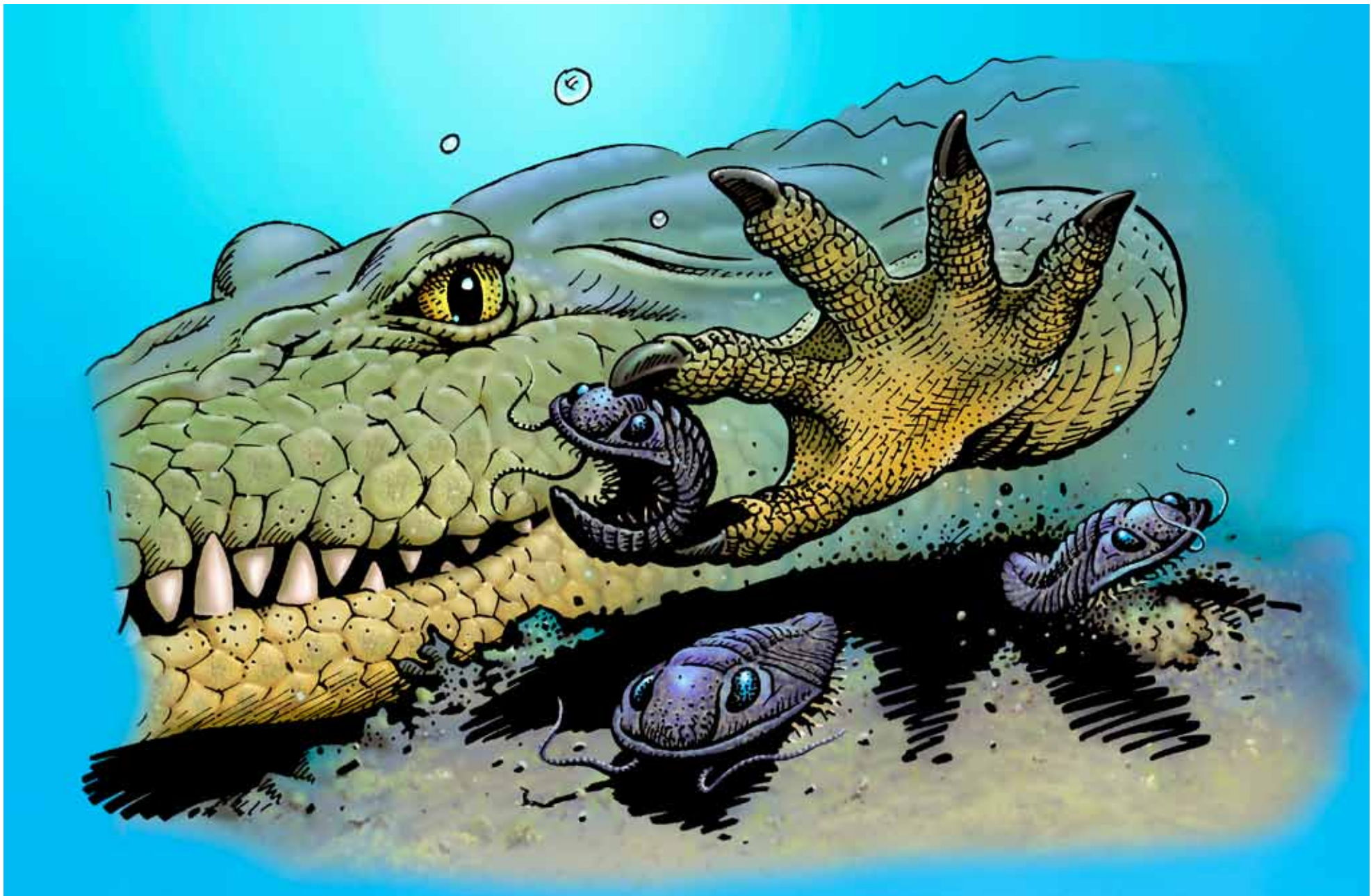
Trilobita

Bibel topol



Phous
pha'a







a'i gini na tribolita - "phamila' bo'on bai gie tho juta 200 cuth ba helo gazi'. Belebele olai gazi' tanba bi topol, uen theni tanba phous bais na pha'a wo klima gie muda-en," laphae' ba'i hangin.



Suntu



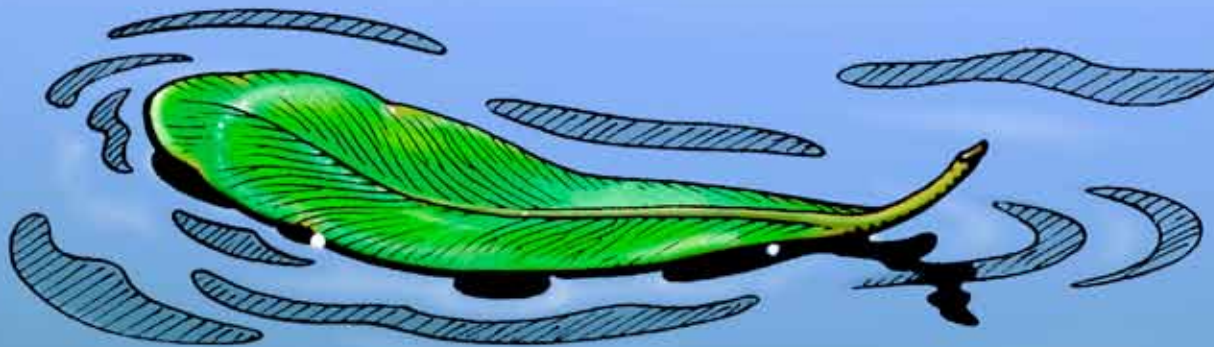
Amonita



ai dale daudau ba no khasa' bo'on olai go'et no nani onal. Gen da Nautilus bon si Mea'-gol mone gie abo phana gie janela no gobon gazal bai goet. Agora are khasa' bai mo Timul gie no aci ta'. Mais khasa' ba'i Nautilus gucu phamila thesik ni', ginil-li amonita.



a'a ha'al Laphae' wo mea'-gol mone mo oa ata dosil thaci gie sa'e laun won. Mea'-gol mone ba'i etho'-no' koen bo'on il oa no lele azal. Etho' no' ba'a jeologu mil ginil heg hini Glossopteris. Ilin won gene wu otel no ba'a otel mug so' gie bon gie no' da goet. Mais, mug



Glossopteris



so' theo gene?

aphae' thecu, "etho'
no' are mug athe
bo'on mo phana
tul gene na man,
mug ba'a ginil-li
Gondwana. Australia
da mug ba'a gie tul
ta', to'o le uen olali
ese-en homo ha'al
zonal gene debeg

Foraminiferu laphae' giral-lo,
ethan-gol dili'en!





H dini kontinente osu. I ie mug ra mos kontinente ba'a gie tul ta'.

ais man i mo jigi ata thebe debel theni geta'. Dinup da tha'a. Eto sa bai lain-gol Kristal di goet bon a ri gilin." A ri sai khasa' bais mo mil lo gie bai-'a gie. Ola'i gig dana debeg dini minarai rai bo'on si kareta no mene wo uza dele plastik go'on da.



Tho juta 250 lag no



Tho juta 100 lag no



Agora

Kontinente gie asa'-en cuth no gie. ✖ = Timor-Leste



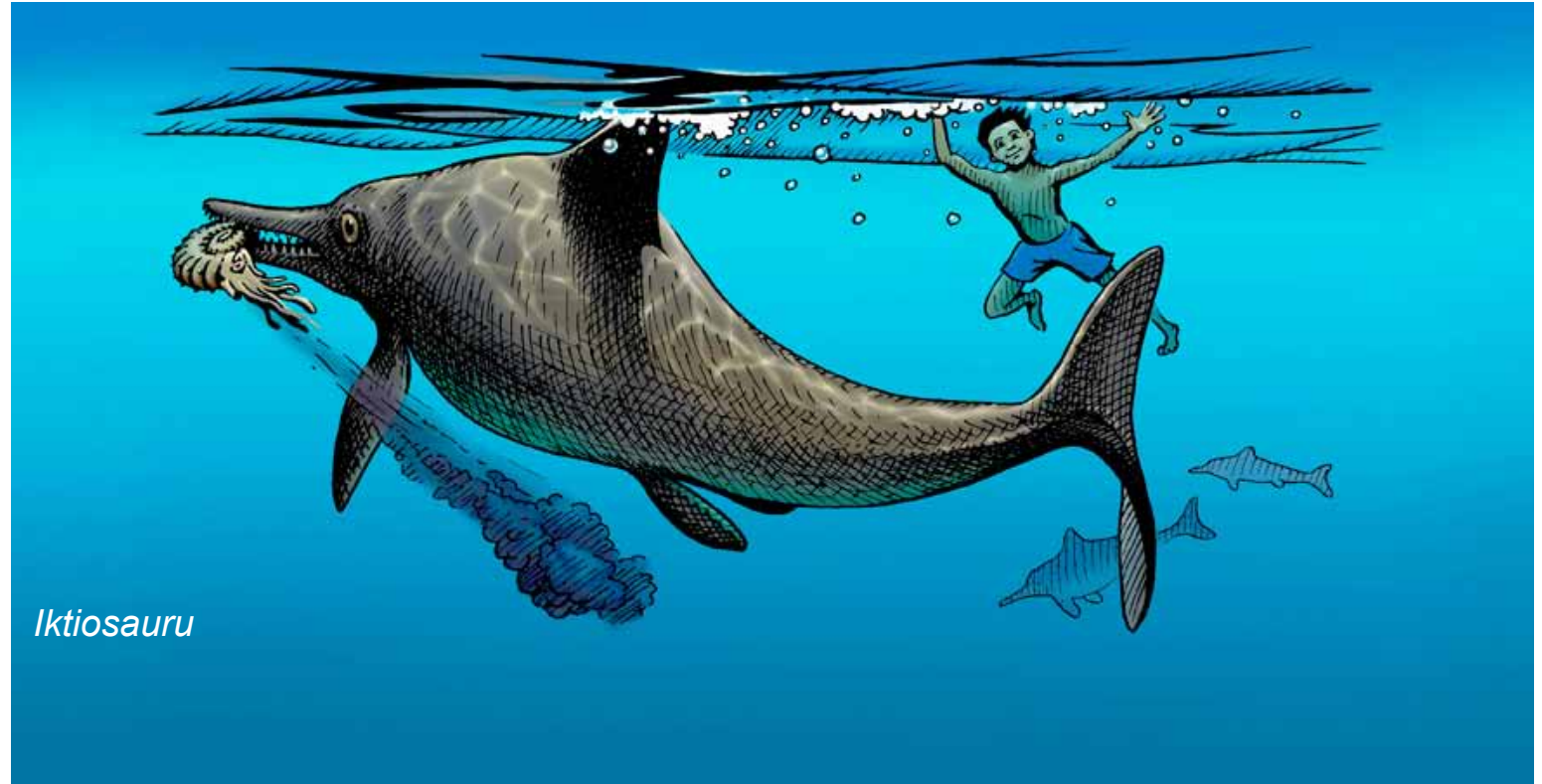
omo ha'al mea'-gol mone laphae' go sura para olali tempu osu ata mal gie. Ba'i hakarak mug-so' azal gie. Antau, olali therel mo mone eni mal, Australia, bo'on si meten superkontinente Gondwana gucu dese ba'a ata mal. Ba'a tempu bo'on tho juta 180 wo tho juta 65 lag mil lo ba.



plesiosaur,
which lived in
the seas with
ichthyosaurs



25





lali therel mele lag mil ba'a no, lapahae' mo gebu ata debel dez para ba'i ata thara nego-
nego na mo zigi no aci ta'. Trilobita aci ni' ha'al wa, mais amonita wu aci dina. Derepent,
reptil masa' bo'on (iktiosauru bo'on) gen da tuniñu gucu thisal gie dama', amonita bo'on
gi. Amonita ba'i reptil bai gita tinta guzu hez, homo ha'al ba'a goet reptil ba'i amonita ba'i
gili'en.



onal gene ola'i Australia tho juta 100 no ba gie wo mug so' hosai. "Dinosauru!" mea'-gol bai



Timimus wo Leaellynasaura





Hukh. Dinosauru ethan-gol bo'on, ba'i otel-'u na gia ginil-li Leaellynasaura, uen theni bi-gol la gia di ginil-li Timimus. Dinosauru ginil onal ba'a jeologu mil dol mil ginil na tholo.



Tais zigi eni gene dinosauru tia osu bo'on mos aci, ba'i si na gia, ginil-li teropode. "man i tempu a re hi'il mal gia," mea'-gol mone bai hangin. "neto wu bai a ri gini dia gie ni'."

omo ha'al mea'-gol mone laphae' ba'i Noroeste eni ata nani mal, Timor-Leste ata mal. I ie mug mo gebu gene dina ta', mais go oa eni no phi masa' gazal daudau wa, il barakh wo barakh dele cino' wa. Kuandu ola'i tempu juta goni'il gie phi', mug ñiat gie mo 'oa no azal.



Phi





empu bon si kontinente Australia gie bok'an norte mal Azia gie gucu cucu', Timor-Leste beleg-en sai illa uen.

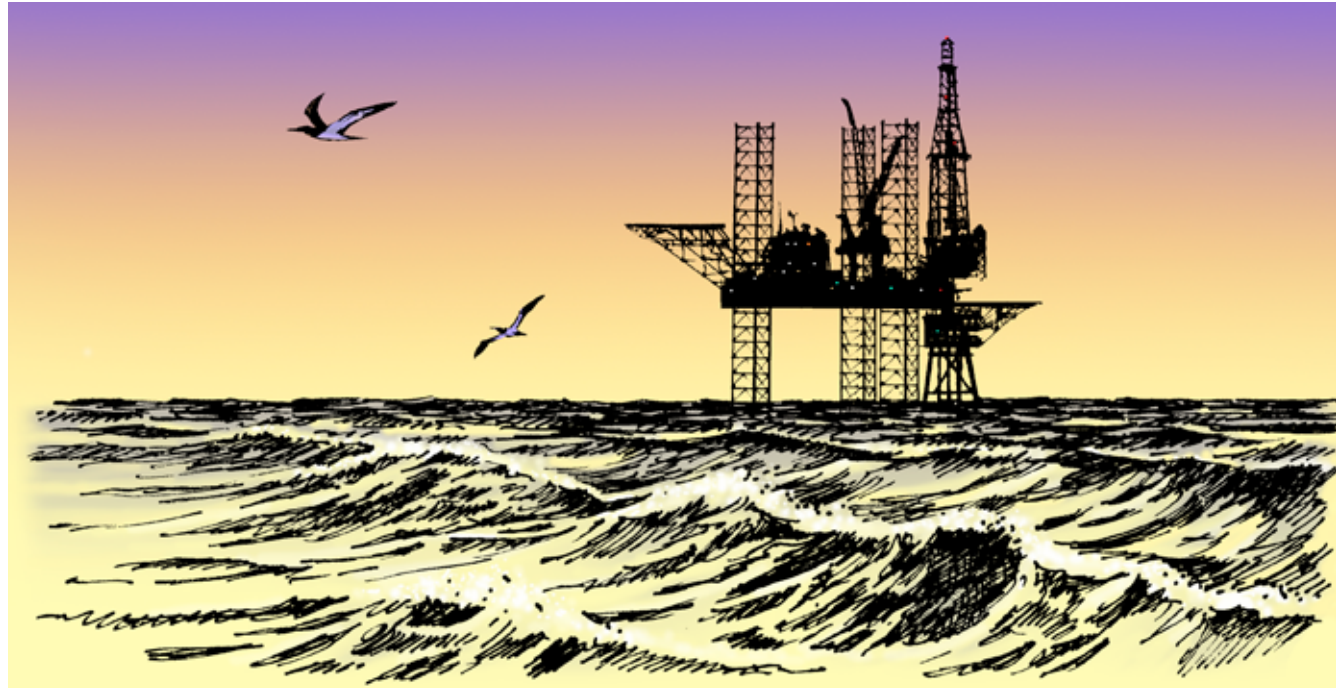


ea'-gol mone wo Laphae' ba'i khole' wa – ola'i mele athe tepel-tepel. Mais laphae' mea'-gol ba'i gege hangin, "Neto ege bai koen konaba ie mug gie dale gie. Eto bai ethan-gol bon gi'



Foraminiferu

Minarai hasai-golo' Mo Mone eni gene, Timul mo-mone eni gene. Hol mo zigi no na jeologu mil minarai wo gas da sagal.





Lina tempu jeolojia gie wo otel-‘u wo khasa’ bu’an si lina ba’a no moris bai gie.



Kristal di goet bon cuth no ili gilin bai gini dimil ta’ e ni’?” mea’-gol mone than wu bai gini dimil ta’ gin.

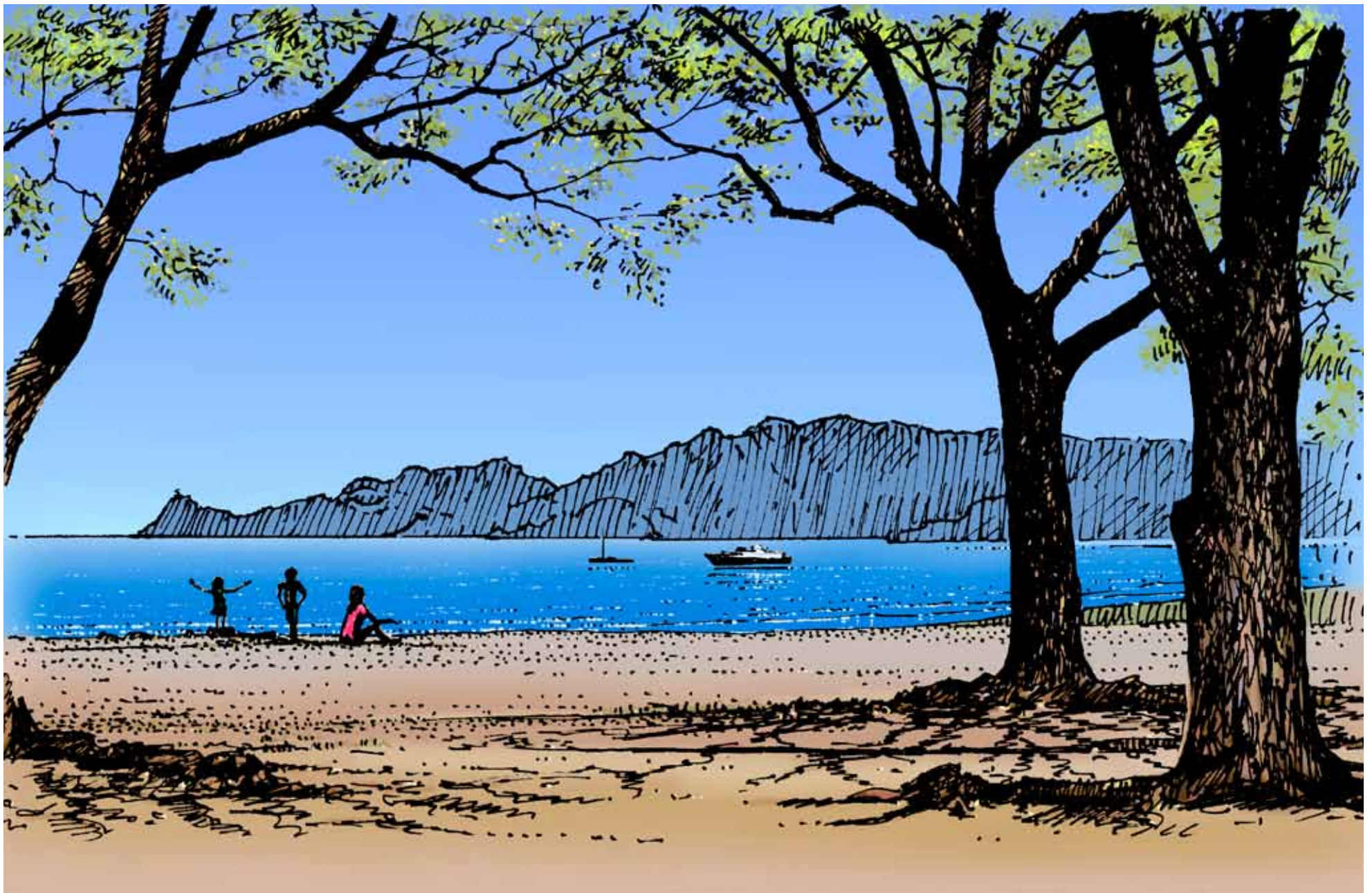


os” laphae’ hangin, “bai ethan-gol bai ese’ homo ha’al butha’ mil lo guluakh-en homo ha’al butha’ ba’a dini hol. Ola’i sele bu’an si debeg dini hol da no na hela. Zonal gene ola’i sai solath, cino’ homo ha’al debeg dini minarai na mehtherei i mo zigi gene azal da.

a’a thecu ha’al wo ha’al, laphae’ malath gie mal, diral tha’a homo ha’al konta’istori ata thebe hanesan i ie illa Timor loi gie parte uen.

Koandu ba’i pontekais no Dili hot sa’e eni da ilin onal, phous onal da ilin laphae’ gilinen-on dama’. Ma thara konta’istoria ba’a aci tanba phous onal ba’a gie gig e?







i-ie le zonal